



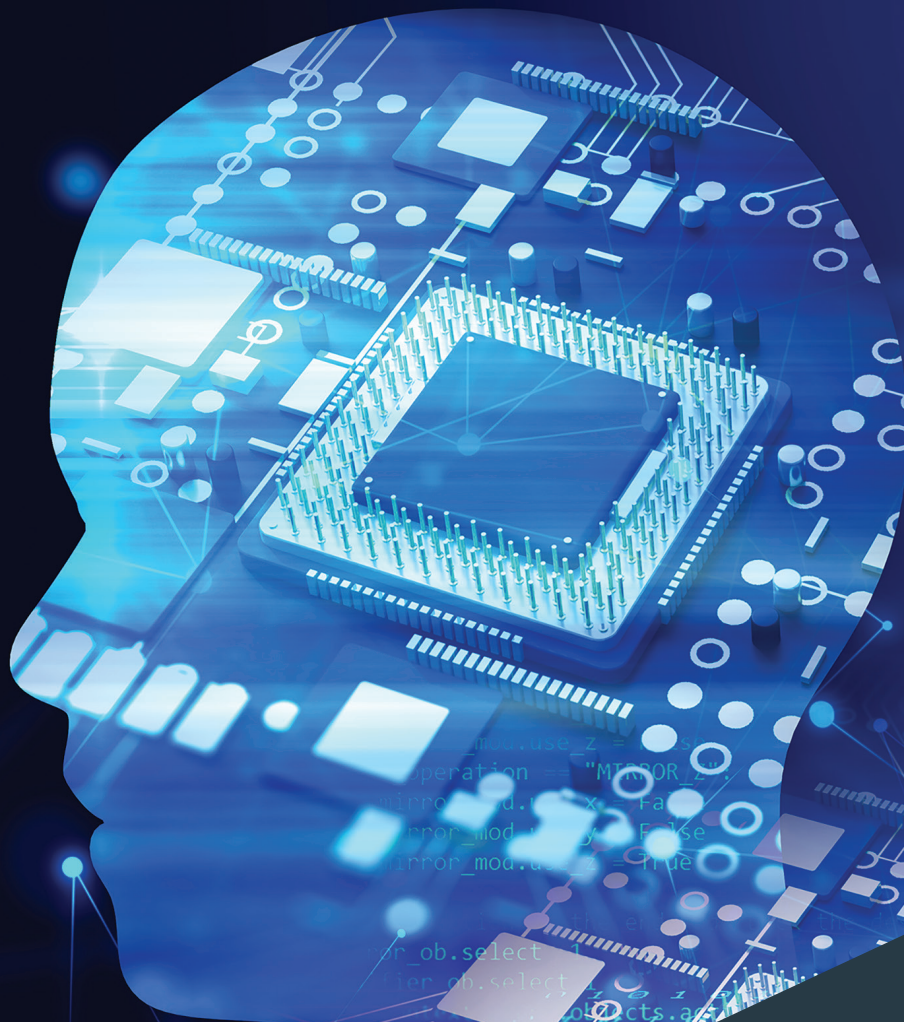
South Australia Globally connected

The Digital Gateway to Southeast Asia
Mission to Malaysia and Singapore
7-11 October 2024
Delegate Brochure



Government
of South Australia

Credit: Fivecast





Minister's foreword



South Australia is open for business.

As Minister for Trade and Investment, every day I meet the incredible businesses, exporters, researchers, and creative minds driving our increasingly dynamic economy.

We're an ideal destination for businesses and governments seeking new trade and investment opportunities – in one of the world's fastest-growing regions.

This year marks the 50th anniversary of partnership between Australia and ASEAN.

Our strong trade links are supported by regional and bilateral free trade agreements including the ASEAN-Australia-New Zealand Free Trade Agreement (AANZFTA) and the Regional Comprehensive Economic Partnership Agreement (RCEP).

This framework provides pathways to grow business, innovation and research partnerships between Australia and the ASEAN Economic Community.

Southeast Asia is a centre of global economic activity and business, with dynamic and diverse markets that present major opportunities for South Australia's critical technologies sector.

We're a trusted and reliable partner. At our dedicated innovation precincts, brilliant minds develop ideas to help solve globally significant challenges.

They're driving collaborative research and development, and commercialising new products and services for customers around the world.

Our green economy leadership and infrastructure provides markets and companies with a strategic partner to help achieve their decarbonisation agenda.

South Australian Government backing is growing a hydrogen industry, and our state is delivering Australia's biggest-ever industrial undertaking for our nation's defence.

A sound regulatory environment, and a long-term growth strategy – with close business and government collaboration – sits at the foundation of our state's investment offer.

The South Australian Government's offices in Singapore and Malaysia provide connections for companies and institutions seeking to expand their two-way links.

And we are working hand-in-hand with the Australian Government to implement the *Southeast Asia Economic Strategy to 2040*.

Our South Australian delegates are keen to build lasting business connections into the future with your region, and we look forward to working with you.

Hon Joe Szakacs MP

Minister for Trade and Investment

Why South Australia

A strong performing economy



AA+ rating from influential credit rating agency S&P Global



Rated #1 of all Australian states in CommSec State of the States Report (Jan 2024-July 2024)¹



Record high merchandise exports worth around \$18 billion over 12 months



Stable government with strong policy frameworks

Green economy leadership



More than 74% of energy generated by renewables, making South Australia **a global leader in renewable energy generation**



Net zero emissions plan for 100% renewables by 2027

Global leader in quality food and wine production



Home to Australia's leading research, education and commercialisation precinct for agricultural science, the Waite Research Institute



Exporters working towards **high-standard ESG credentials** (environmental, social and governance credentials)



Robust biosecurity and traceability systems, protecting against animal and plant pests and diseases, food borne illnesses, and the misuse of rural chemicals

¹ South Australia makes it three-in-a-row as best performing economy: CommSec State of the States (commbank.com.au)

Growing innovation ecosystem for critical technologies



More than **750 startups** employing more than 7500+ people



By 2030 South Australia will be recognised as an **international leader in the defence and space industries**

Cost-competitive for business



The **lowest taxing state in mainland Australia**, with zero-payroll tax for wages under \$1.5million



State of the art, efficient **port network**



Close proximity to Asia making it an ideal hub for technological partnership and trade



Innovation districts

Our sectors co-exist in hi-tech hubs and research centres, forging collaborative ecosystems that open doors and inspire new ways of thinking.

Defence Super District

34 kms from CBD

Key national defence research, manufacturing and sustainment hub housing the RAAF Base Edinburgh, Defence Science and Technology Group and major defence companies.

Osborne Naval Precinct

26 kms from CBD

Australia's largest naval shipbuilding hub incorporating a critical mass of world-class warship design and construction skills. Significant upgrades are slated to make it the most technologically advanced naval shipyard in the world.

Technology Park

17 kms from CBD

Hub for systems development and integration, information communications technology, advanced manufacturing and electronics, and home to over 100 small to medium enterprises, multinationals and start-ups.

Adelaide BioMed City

Adelaide CBD

AUD\$3.8 billion and medical innovation district with leading edge anchor institutes and companies that cluster and connect with start-ups, business incubators and accelerators.

Lot Fourteen Innovation District

Adelaide CBD

Australia's first ideas and innovation neighbourhood and home to the Australian Space Agency, SmartSat CRC, Defence and Space Landing Pad, FIXE start-up hub, MIT Adelaide Living Lab, Australian Institute for Machine Learning and the Australian Cyber Collaboration Centre.

Tonsley Innovation District

12 kms from CBD

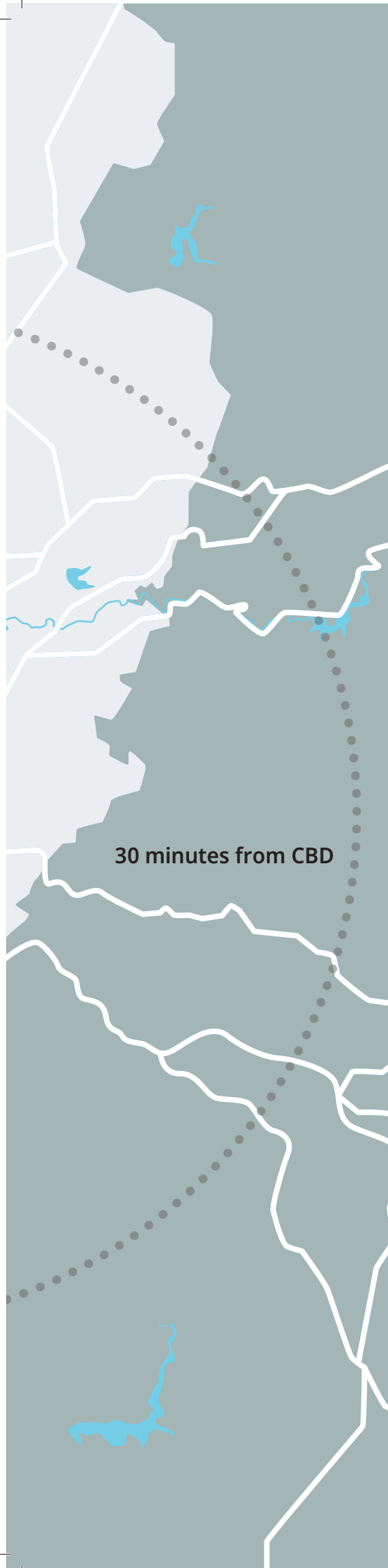
Home to high-value manufacturing industries including defence, health, medical devices and assistive technologies, clean tech and renewable energy, software and simulation, mining and energy services.



Adelaide CBD

N

5 kilometres
3.1 miles



Lot Fourteen Innovation District

Australia's premier hi-tech innovation precinct.

Location: Adelaide CBD

Focus: Space, defence and critical technologies. Lot Fourteen connects universities, researchers, entrepreneurs, start-ups and companies, such as:

- Digital Health Cooperative Research Centre

- MIT Adelaide Living Lab
- The University of Adelaide
- Australian Institute for Machine Learning
- Australian Cyber Collaboration Centre
- Australian Space Agency
- Defence and Space Landing Pad
- FIXE start-up hub

Commercial tenants include Microsoft Azure, Commonwealth Bank, Amazon Web Services Applied Sciences and Salesforce.

Tonsley Innovation District

Global benchmark for reimagining and redeveloping traditional manufacturing facilities.

Location: 10 kms south of the Adelaide CBD

Focus: High-value manufacturing and innovation, connecting leading-edge research and education institutions, established businesses, start-ups, incubators and accelerators, government and the community.

Focus sectors:

- Medtech and medical devices
- Industry 4.0, automation and software
- Cleantech
- Energy

Capabilities include:

- Global Centre for Modern Ageing
- Flinders Digital Health Research Centre
- Micro-X
- Aged Care Research and Industry

- Innovation Australia (ARIIA)
- Zeiss
- Line Zero Factory of the Future
- BAE Systems
- Siemens Energy
- Hydrogen Park SA
- Flinders Village: a biomedical precinct with innovation hub and Medical Device Research Institute (MDRI) connected to nearby Flinders University. Flinders Village brings an advanced biomedical research centre together with an academic and hospital cluster that includes Flinders Medical Centre, Flinders Private Hospital, and Flinders University
- Medical Device Research Institute (MDRI) - A multi-disciplinary collaboration integrating engineering, medicine, allied health and information technologies
- Medical Device Partnering Program (MDPP) - Flagship initiative supporting medtech companies to develop minimum viable products.

Our strengths = your opportunity



World-leading AI and data capability

Globally competitive research and development in Artificial Intelligence (AI), machine learning, computer vision and deep learning



Network of innovation districts and hubs

Lot Fourteen Innovation District, Tonsley Innovation District, Technology Park Adelaide, Adelaide BioMed City, Edinburgh Defence Precinct and Osborne Naval Precinct



Australian Cybersecurity Collaboration Centre

Central connection point for cyber resilience improvement



Exceptional connectivity

Ten Gigabit Adelaide, GigCity and SABRENet - high reliability, low latency optic fibre connectivity throughout greater Adelaide



MIT Adelaide Living Lab

Linking South Australia to the world's best data, AI and Web3 capability from MIT's world-leading secure data analysis tools and methodology to undertake ground-breaking data projects.



Network of national technology companies

Deloitte, PwC, Accenture, Cognizant and Commonwealth Bank of Australia



South Australian Space Industry Centre

Whole-of-state-government focal point, spearheading the advancement of space industry innovation, research and entrepreneurial development



Defence Science Technology Group

Leading the delivery of innovation, science and technology programs for defence intelligence, joint capabilities and joint operations



World-class hi-tech capabilities

Artificial Intelligence, Augmented Reality, Virtual Reality, quantum and data analytics leadership, and top six in the world for computer vision research



Adelaide BioMed City investment of AUD\$3.8 billion

Home to expertise and capabilities that brings together institutes and centres from health and life sciences, clinical care, research, education and industry

"We identified Adelaide early on as the prime location for a Living Lab in Australia and the broader region due to its leadership in data analytics and machine learning. We also saw Lot Fourteen as the perfect location for a Living Lab – it's a place where entrepreneurs, investors, businesses, global industries, universities and other leading research institutions come together to share ideas and collaborate to invest in the innovation economy."

Professor Alex 'Sandy' Pentland, Massachusetts Institute of Technology

Artificial Intelligence and data

South Australia's collaborative ecosystem brings together dominant data and Artificial Intelligence (AI) capabilities as the foundational building blocks for emerging cyber security, AI and data analytics knowledge generation and commercialisation. This powers transformative digital technologies across industry sectors.

Australian Institute for Machine Learning

Location: Lot Fourteen Innovation District, Adelaide Central Business District

The Australian Institute for Machine Learning (AIML) is part of the University of Adelaide. AIML provides AI capability for global brands including Amazon Web Services, Lockheed Martin Australia, BAE Systems, GSK and BHP Billiton.

Research themes: deep learning, computer vision and robotic vision, natural language processing and visual question answering, medical machine learning, space, defence and agriculture.

AIML is ranked in the top six worldwide in computer vision (csrankings.com) and is the top site in Australasia for AI research generally, with world-class expertise in AI, computer vision and deep learning.

Centre for Augmented Reasoning

Location: Lot Fourteen Innovation District, Adelaide Central Business District

Within AIML, the Centre for Augmented Reasoning leads the research and development of new advanced augmented systems and improves machine learning technology across a range of applications including:

- machines that continually learn new things while interacting with the environment
- machines that work with data analysts to optimise business processes
- machines that can ask people questions in ways that are more natural and easier than filling in forms
- robots that can understand and follow instructions from people and factories where people and machines work seamlessly together without the need for constant reprogramming of software.

School of Computer and Mathematical Sciences

Location: University of Adelaide, Adelaide Central Business District

Recognised for world-leading rankings in the areas of computer vision, automation and control, and computer science with world-class expertise working to solve some of the most challenging societal problems in pioneering ways.

The School of Computer and Mathematical Sciences actively seeks research collaborations with industry through post-graduate student projects, student internships, short term consultancy projects and collaborative grant funding projects.

MIT Adelaide Living Lab

Location: Lot Fourteen Innovation District, Adelaide Central Business District

The MIT Adelaide Living Lab is a collaboration with the Massachusetts Institute of Technology (MIT) supported by the Government of South Australia. The Lab facilitates data focused projects that rely on collaborative innovation consortiums to create next generation data infrastructure that have global applications.

Industrial AI Research Centre

Location: University of South Australia, Adelaide Central Business District

University of South Australia's Industrial AI Research Centre brings together experts from across computer sciences to develop solutions for autonomous and augmented intelligence systems. Their researchers work with organisations around the world such as Siemens, BP Australia, and Yokogawa Electric to design sophisticated AI-driven solutions.

Interactive and Virtual Environments

Location: University of South Australia, Adelaide Central Business District

The Australian Research Centre for Interactive and Virtual Environments (IVE) is a world-leader in Augmented Reality (AR) and Virtual Reality (VR) and has produced the most AR papers of any institute or university in the world.

IVE is a unique alignment of computer science, engineering, art, architecture and design. IVE is responding to the challenge of increased global demand for AR and VR technologies, with leading research including wearable computing, interface design, empathic computing, 3D visualisation, perception and telepresence.



South Australia's cyber ecosystem advantage

South Australia has world-leading capabilities in cyber security, and with the Australian Cyber Collaboration Centre, fosters an ecosystem where industry, researchers and government can collaborate, support and enhance Australia's reputation as a cyber security leader that delivers smart solutions. As the defence state, defence, defence science, university research and defence industries also underpin this capability.

Australian Cyber Collaboration Centre

Location: Lot Fourteen Innovation District, Adelaide Central Business District

The Australian Cyber Collaboration Centre builds cyber capacity and security across Australia's digital landscape. The Australian Cyber Collaboration Centre assists businesses to understand and navigate the cyber specialists and ecosystem to address their specific cyber needs. It connects leaders, thinkers and doers of today and tomorrow with real opportunities to learn, activate businesses, adapt to change and solve challenges within the digital domain.

The Australian Cyber Collaboration Centre is a central connection point for businesses looking to improve their cyber resilience by:

- raising awareness of cyber vulnerabilities and challenges
- providing and facilitating rigorous testing of hardware and software
- providing world-class cyber training to upskill and increase the pool of cyber talent
- linking and coordinating the right capability development
- tracking the progress and value of investments.

Defence Science and Technology Group - Cyber, Intelligence and National Security division

Location: Edinburgh Defence Precinct

The Cyber, Intelligence and National Security division leads the delivery of innovation, science and technology programs for defence intelligence, joint capabilities and joint operations.

The division focuses on:

- national security
- artificial intelligence
- quantum
- intelligence
- cyber
- joint electronic warfare.

Royal Australian Air Force – cyber capability

Location: primarily based at Edinburgh Defence Precinct

The Royal Australian Air Force's (RAAF) leading cyber warfare capability provides expert advice and accreditation of the RAAF's standalone mission systems and networks. In addition, the RAAF supports exercises and operations around the world, receiving widespread recognition for their cyber capability effectiveness and cutting-edge approach.

Advanced technology infrastructure

Cloud infrastructure

ASX 100-listed technology company NEXTDC has built an Uptime Institute Tier IV certified data centre facility in Adelaide, in proximity to the Lot Fourteen Innovation District.

Asia-Pacific leader DCI Data Centers' Uptime Institute Tier III certified data centre is located just 10 minutes from the CBD and Adelaide Airport. A second data centre is in development.

Adelaide has a connectivity ecosystem made up of 24 colocation data centres, 177 cloud service providers, 24 network fabrics and 50 service providers.

Ten Gigabit Adelaide

Ten Gigabit Adelaide is a high-speed, high-performance fibre optic data network across Adelaide commercial buildings enabling businesses to share and receive high volumes of data at 10 gigabits per second.

Australia's first GigCity

The GigCity network provides affordable gigabit-speed internet to tenants at designated innovation precincts and co-working spaces across Adelaide, harvesting a new era in digital connectivity and collaboration.

SABRENet

SABRENet is a fibre-only telecommunications network constructed to raise the performance of South Australia's education, research, and innovation.

The SABRENet network extends over 400 kms of fibre optic cable with data speeds from one gigabit to 100 gigabits per second and connects more than 230 locations in the greater Adelaide metropolitan area including:

- universities
- innovation precincts
- teaching hospitals
- TAFE campuses
- schools.



Connected health innovation

Data-driven and precision health innovation

Adelaide is home to world-leading artificial intelligence and data analytics capabilities, supported by unique clinical infrastructure, longitudinal datasets and biospecimen for precision clinical research and drug development.

The Australian Institute for Machine Learning (AIML) is one of Australia's largest AI capabilities. It conducts globally renowned research in machine learning, artificial intelligence, computer vision and deep learning. AIML works with leading global companies including Roche, GSK and Medtronic to push the frontier of precision health.

Connected innovation precincts

Adelaide's flagship precincts combine world-class researchers, companies, government, academia, infrastructure, investment, teaching and clinical care, creating unique opportunities for innovation that underpin the state's leadership and strengths.

These include Adelaide BioMed City, Tonsley and Lot Fourteen Innovation Districts, ensuring health and medical research, manufacturing and clinical care are embedded with technological innovation.

This makes Adelaide and South Australia the perfect location to collaborate, innovate, and trial new products, ready for global commercialisation.

Manufacturing capability

Australia's commercial drug manufacturing pedigree was forged in South Australia and features many of its leading academic manufacturing resources and established commercial operations.

Our contract development manufacturing organisations (CDMOs) support process development through to current Good Manufacturing Practice (cGMP) for both clinical and commercial scale for global market regulators, with capability across small and large molecules.

Adelaide is home to global operations for pharma and nutraceutical therapeutics, generics and supplement manufacturers.

Drug development and biotech

South Australia is a centre for drug research and new biotech companies. Key opinion leaders focus on drug development across a wide range of specialisations including immunology, infectious diseases, neuroscience and endocrinology.

Oncology is a focus, including precision health, CAR T-cell technology, computational systems, epigenetics, single cell and spatial technologies, gene regulation, molecular signaling, translational oncology and cancer genomics.



Company profiles



Callum Golding

CEO

E: cgolding@csp.global

M: +61 499 895 005

www.csp.global

CSP Global

At CSP, they don't react, they respond. As a leading provider of managed security and enablement services, CSP understand the challenges and are dedicated to reducing them. Their approach is empathetic and proactive, ensuring they address pain points effectively.

CSP has developed a unique approach that addresses the risk profiles of each individual client. By dedicating time and effort to thoroughly understand the clients' needs, they create robust, cost-effective strategies, deliver 24x7 detection and response, and minimise the attack surface by aligning with the industry's best security frameworks.

CSP are partners with ASD and part of the CTIS (Cyber Threat Intel Service) which allows them to ingest and contribute real-time Threat Intelligence to customers across APAC. In a rapidly evolving landscape, including advancements in AI, staying ahead requires a proactive and expert team. They are that team, ready to help navigate and thrive during the age of digital transformation and achieve more with less.



Cyber Governance

Venu Annam

CEO

E: venu.annam@cybergv.com.au

M: +61 478 752 855

www.cybergv.com.au

Cyber Governance Pty Ltd

Cyber Governance understand the critical importance of maintaining a strong cyber security posture. Their range of services includes benchmarking cyber security posture with industry peers, conducting detailed cyber security maturity and risk assessments, and implementing robust cyber risk management frameworks. Their goal is to empower an organisation with the tools and knowledge needed to stay ahead of emerging threats and ensure continuous protection.





Nathalie Taquet
CEO

E: Nathalie.taquet@ebottli.com
M: +61 421 222 441

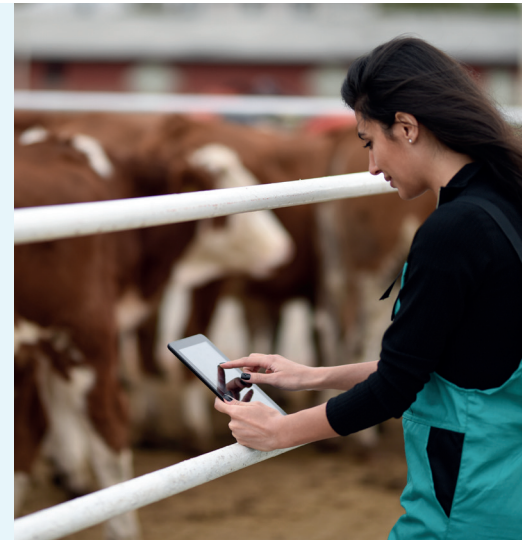
www.ebottli.com

eBottli

eBottli, recognise the specific challenges facing livestock and fish industries, particularly in Malaysia and Singapore. That's why they have introduced eLivestock and eFish, innovative mobile cloud-based platforms designed to streamline operations and enhance compliance, traceability, and efficiency. With more than 90% of these sectors being family-run and only a small fraction fully digitalised, their solution provides an affordable, scalable approach with a user-friendly monthly subscription model.

eLivestock and eFish allow producers to manage their supply chains effortlessly. By digitising records, you can reduce handling operations by up to 30%, boost storage capacity by up to 40%, and virtually eliminate errors by up to 99%. Reporting for compliance becomes easy with data export features, saving time and effort. Accessible from any device, their platform ensures producers have full control over their operations without needing complex IT setups.

Their goal is to empower farmers and fishers to meet growing regulatory pressures and customer demands for transparency, all while providing peace of mind and efficiency from farm to table. They're not just improving operations, they're helping build the future of sustainable agriculture and aquaculture.



Yvonne Sears
Founder & CEO

E: yvonne.sears@elev8resilience.com
M: +61 448 695 163

www.elev8resilience.com

Elev8 Resilience

Elev8 Resilience was founded on the principle of collaboration and the integration of specialist disciplines to provide comprehensive and effective services. Their founder recognised the immense benefits of bringing together diverse expertise and has built Elev8 Resilience to connect the best minds and experiences in the industry.

Elev8 Resilience value diversity of thought, drawing from personal experiences, cultural backgrounds, and core business resilience disciplines. They believe in the power of combining business continuity, information security, privacy, data protection and cybersecurity to create robust solutions for our clients.

By engaging with key partners and industry thought leaders, Elev8 aim to foster a cooperative environment where resources are maximised, and innovation thrives. Their mission is to work together to achieve outstanding business outcomes in today's fast-paced and ever-evolving world.





Deniz Subasi
 Founder & CEO
 E: deniz@experteaseai.com
 M: +61 424 014 661
www.experteaseai.com

ExpertEase AI

ExpertEase AI (ExA) is an innovative startup founded in 2023, specialising in cutting-edge artificial intelligence solutions for business communication. Despite its recent inception, ExA is rapidly emerging as a promising player in the Large Language Models (LLM) and AI-driven customer service sector.

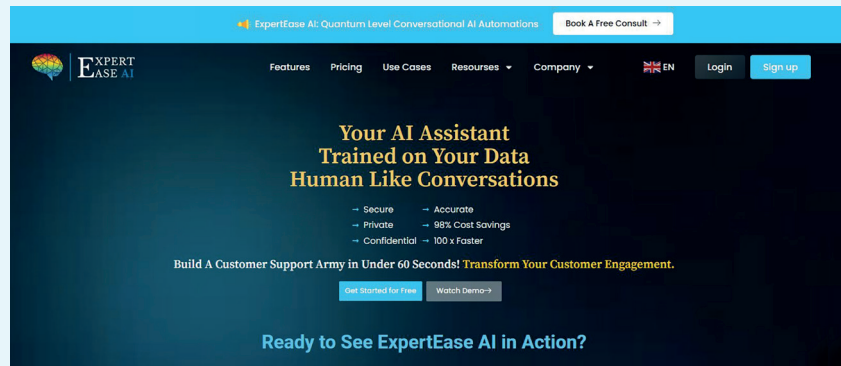
Their flagship product is an advanced AI-powered chatbot, representing a significant advancement in conversational AI technology. This chatbot swiftly processes and learns from extensive organisational data, enabling human-like interactions across over 100 languages.

A key differentiator of ExA's technology is its ability to operate securely behind login systems and integrate seamlessly with companies' CRM and ERP platforms. This feature ensures that their AI can access and utilise sensitive customer data while maintaining strict privacy and security standards.

ExA's proprietary algorithms facilitate multi-modal learning, combining text, voice, and visual data to deliver comprehensive, context-aware responses. This allows businesses to provide personalised, efficient customer service around the clock, significantly reducing operational costs without compromising on quality.

They cater to a range of clients from various sectors, including finance, healthcare, e-commerce, and technology. Their solutions are designed to enhance operational efficiency and data utilisation, even in highly regulated industries.

At ExA, they're dedicated to pushing the boundaries of AI technology while prioritising data privacy and security. As they continue to innovate, ExpertEase AI aims to redefine business communication, bridging the gap between artificial intelligence and human expertise.



Michael Barlow
 Director
 E: michael.barlow@garli.com.au
 M: +61 455 189 270
www.garligroup.com.au

Garli Group

Garli Group is an Australian Aboriginal-owned group of companies offering a range of tailored services and solutions to our valued clients. They are a multi-disciplined business group offering:

- Civil construction and maintenance
- Mining services
- Marine construction
- Energy/decarbonisation solutions
- Medical services/supplies

The medical division of Garli Group is comprised of three distinct yet interconnected businesses, each specialising in a different aspect of the healthcare sector. These businesses include workforce medical assessments, cutting-edge medical technology, and an extensive range of medical supplies.





Richard Kwan
CEO

E: richard@kiratech.com.au
M: +61 403 618 762

www.kiratech.com.au

Kiratech

Kiratech is a software development company specialised in delivering healthcare digital workflow solutions.

Their mission is to empower hospitals in surgical cost recovery and continuous improvement of clinical operations for compliance. Their surgical tracking solution transforms surgical and implantable-related administrative processes into a seamless digital experience that enables real-time tracking of surgical items, instant billing reconciliation and proactive inventory management with automated alerts for changes and recalls by removing of any manual data entry.

They have streamlined interdepartmental workflows, reducing seven manual interactions to a single digital action touch point. Their continuous improvement dashboard solution automates hospital audits and remains compliant in delivering care. They support and facilitate communications for more than 4,000+ clinicians in a network with 90+ departments through physical screens that bridges the gap and resolves the struggle executive and operation have with department compliance while achieving strategic KPIs.



Robin Sands
CEO

E: robin@link4.co
M: +61 421 022 241

www.linkfor.asia/my

Link4

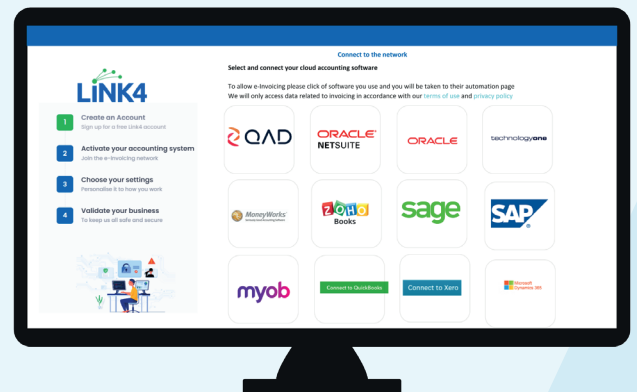
Link4 is a specialised e-Invoicing provider servicing clients in many countries, including Malaysia and Singapore. Using a current ERP system, they can deliver invoices instantly without using email or manual processes and tell clients how they can best utilise e-Invoicing in their organisation.

No matter which Cloud Accounting software or ERP system you are using, Link4 enables users to send invoices directly into their customer's accounting systems instantly. Link4 automates the invoicing process for organisations saving them time and money and allowing them to focus more on other aspects of their business that require bigger effort and resources.

Results include:

- Government compliance
- More secure than email
- Better cash flow
- Less errors
- More efficient
- Strong customer/supplier relationships

Their vision is to ensure the Procure-to-Pay cycle is as simple and safe as possible, and automated for any size business.





Mr Brad Thomas OAM

Chief Executive Officer

E: bthomas@prophecyinternational.com

M: +61 419 697 359

www.prophecyinternational.com

Prophecy International

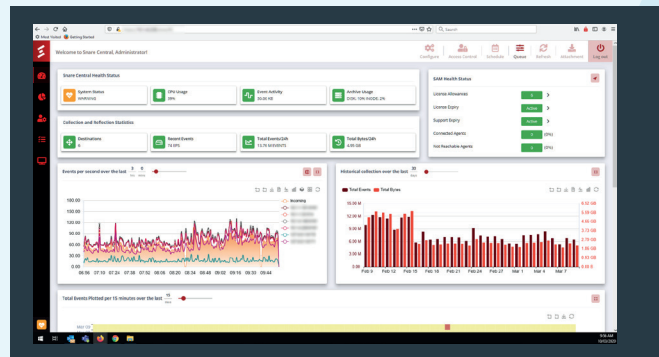
Prophecy is an Australian based global Business-to-Business (B2B) and Business-to-Government (B2G) software company developing innovative SaaS/Cloud, cyber security and big data/ analytics solutions. The company is headquartered in Adelaide, Australia and has over 100 staff in offices in Sydney Australia, Denver USA, Manila in the Philippines and remote offices in the UK.

Their two primary product offerings in Snare and eMite were acquired in the purchase of the companies that had developed the IP and both are now wholly-owned subsidiaries of Prophecy.

Prophecy software has been deployed at more than 4,000 customer sites globally and their continuous re-invention and commitment to product innovation has enabled Prophecy to maintain their position as a trusted vendor within industries such as banking and finance, public sector, defence and military, healthcare, utilities, manufacturing and retail.

Prophecy sells to global markets with a strong focus on large enterprise and government through their sales team in Europe, USA and APAC, and through a global network of partners across all of their product offerings.

Their customer base includes some of the best-known brand names in the world including many of the Fortune 500.



Nick Palousis

Managing Director

E: nick@2xe.com.au

M: +61 408 896 552

www.2xe.com.au

2XE Pty Ltd

2XE is an award-winning, digitally enhanced consulting firm that helps its clients achieve and sustain net zero emissions with the best possible holistic return on investment. They have worked with over 1,000 companies and government agencies on ESG, net zero, circular economy and sustainability engagements, both in Australia and internationally. 2XE's service offerings span strategy development, climate-related financial disclosures, engineering, data analytics, and outsourced carbon and sustainability management.

At the core of 2XE is their proprietary carbon management software application, Recouple™, which provides a customisable and dynamic approach to the tracking, reporting and management of the organisation's net zero program. Recouple was designed and developed by industry practitioners with over 20 years of real-world experience in the field, and together with 2XE's consulting services, they are able to provide a holistic carbon management solution for their clients. Recouple consists of three key modules:

1. PROFILE, which provides an all-encompassing carbon accounting system,
2. PLAN, which provides a suite of tools to develop and implement tailored carbon reduction plans
3. PERFORM, which provides the ability for the organisation to conduct deep levels of performance analysis and tracking through a range of benchmarking and insights tools.



The South Australian lifestyle

Adelaide has been named *The Most Beautiful City in the World* in 2024 (Architectural Digest).

There is a year-round calendar of large events, entertainment, culture and excitement. Some of the best known cultural and arts events include the Adelaide Festival, WOMADelaide, Tasting Australia, Adelaide Fringe, Adelaide Cabaret Festival and OzAsia Festival. South Australia hosts international and national sporting events including cycling's Tour Down Under and the Adelaide 500 car race.

Our Mediterranean climate – warm, dry summers and mild winters – enables an exciting outdoor lifestyle.

South Australia also hosts globally-renowned sporting events including LIV Golf Adelaide, winner of the World's Best Golf Event of the Year 2023 at the world golf awards.

Adelaide's coastline stretches more than 30 kilometres, delivering wide, golden beaches with clean seas for swimming, kayaking, surfing and more.

It's hard not to escape into nature with parks and walking trails everywhere.

Best of all, getting around Adelaide is effortless. Nothing is really more than 30 minutes away by car so it's easy to have a family, sporting and social life every evening and an action packed, or relaxing, weekend!

South Australia delivers a better, more affordable lifestyle and opportunities – whether in the city or suburbs, on the coast or in the hills.

- **Most affordable unit rents and second most affordable house rents of any Australian mainland capital city.²**
- **Affordable and accessible childcare.**
- **Good public transport and no toll roads.**
- **Great public and private schools.**
- **Adelaide's three public universities are ranked in the top 1% of the estimated 26,000 higher education institutions in the world.³**

² Domain Rental Report, June 2024

³ Source: Times Higher Education World University Rankings 2024 and qs.com





Contact

Natalya Twohill

South Australia Regional Director (Trade & Investment Southeast Asia)
Australian Trade and Investment Commission, Singapore

M: +65 8028 9817

T: +65 6418 8410

E: Natalya.Twohill@austrade.gov.au

Export support | Department of State Development

www.export.sa.gov.au/growing-services-and-technology-exports



statedevelopment.sa.gov.au



Published October 2024.

No responsibility for any loss or damage caused by reliance on any of the information or advice provided by or on behalf of the state of South Australia, or for any loss or damage arising from acts or omissions made, is accepted by the state of South Australia, their officers, servants or agents. Produced by the Government of South Australia © October 2024. Content correct at time of printing.



Government
of South Australia